

TEST REPORT

1. Applicant

Client Name : 포스라이팅
Address :
Date of Receipt : 2016-03-31 오후 4:18:44

2. Purpose of Report :

3. Test Standard / Item : /

4. Test Period : 2016-03-31 오후 4:10:54 ~ 2016-03-31 오후 4:17:22

5. Test Environment

Ambient Temp. : (25 +- 3) °C
Relative Humidity : (50 +- 10) % RH

6. Test Result : Refer to the attachment

Test Item
Name of Product :
플레넷 원형투광등 120W 5700K PHB-12012A-DA
Model / Rating :
Model :
Rating :

Confirmation	Test by Eunyeong.Park	Technical manager Minjun.Jang
--------------	--------------------------	----------------------------------

 The result shown in this test report refer only to the sample(s) tested unless otherwise stated.
 This report cannot be reproduced, except in full.
 This report is for reference only. It cannot replace the report by standard organization(s).

TEST RESULT

Report Number	Sample Name	Sample Number	Test Standard
	플레넷 원형투광등 120W 5700K PHB-	12012A-DA	
Test Item	Unit	Result	Memo
Beam Distribution Test	-	See attachment	
ATHD	%	8.0	
CIE 1931 Cxy		0.0000, 0.0000	
Correlated Color Temperature	K	0	
Ra	-	0	
Power Factor	%	0.970	
Input Voltage	V	220.590	
Input Current	A	0.561	
Input Watt	W	119.95	
Lamp Flux	lm	15646.2	
Efficient	lm/W	130.34	
Illuminance	lx	6891	1 m
		1723	2 m
		766	3 m

* This test result is for the sample provided by the client.

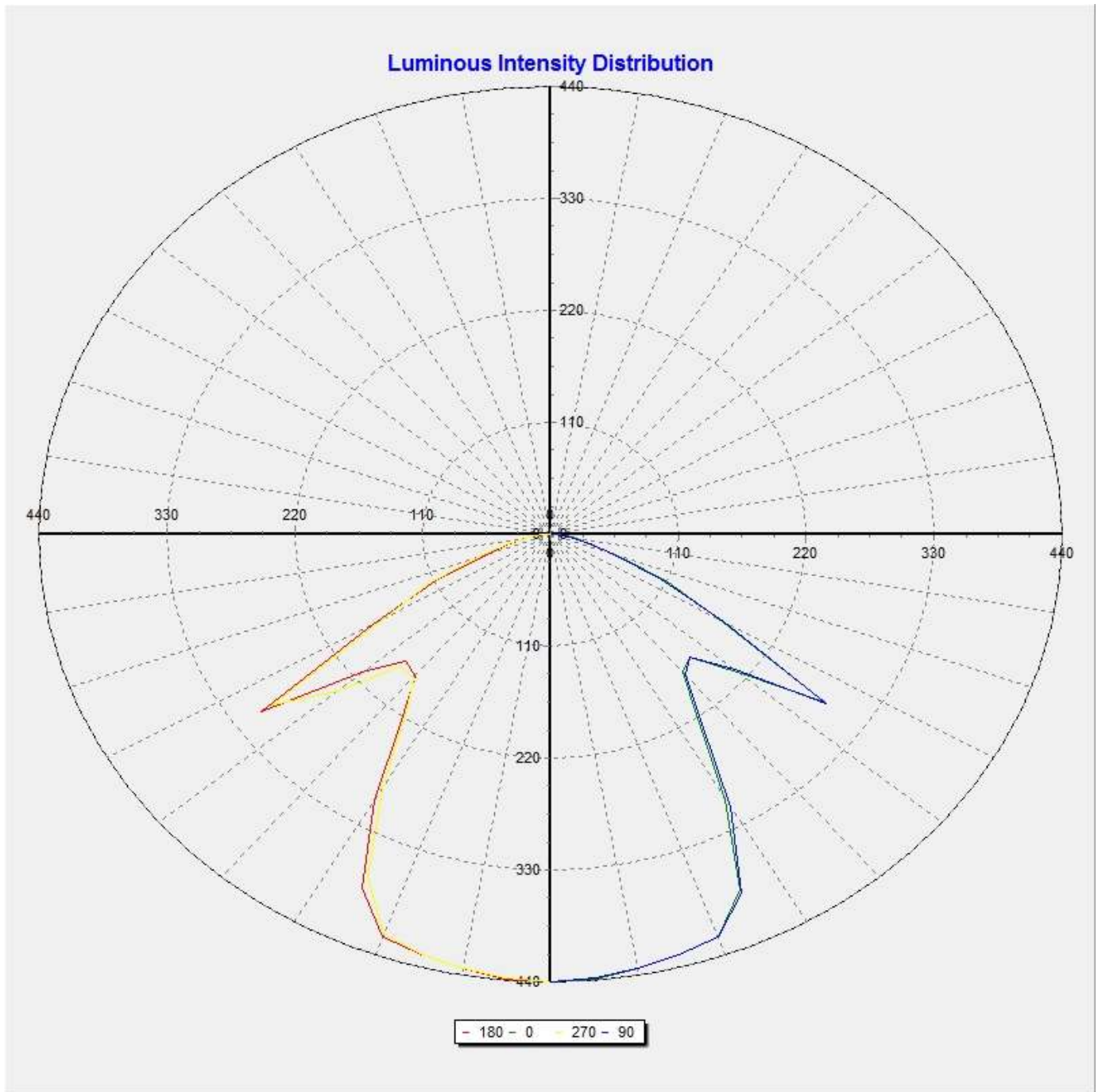
Sample photo



Luminaire

Lamp	Report		
No. of lamps	Filename D:\배광\16data\포스라이팅\플레넷 원형투광등 120W 5700K PHB-12012A-DA 3005 0331.jdt		
Lamp flux (lm)	Operator	Current (A)	0.561
Total flux (lm)	Date46	Power Factor	0.97

2016-03-31 오후 4:18:44

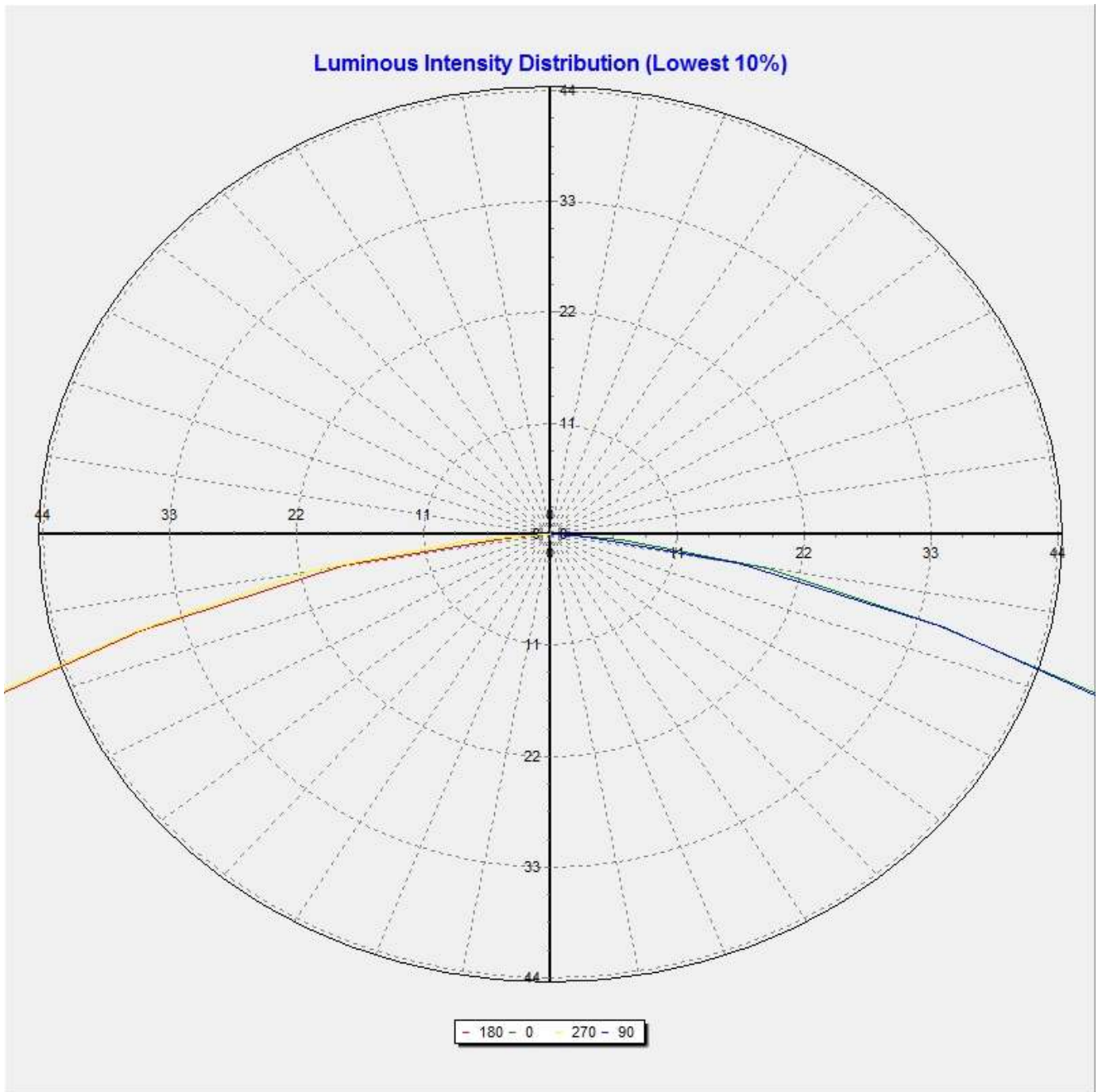


All luminous intensity values are in Cd/KLm unit.

Luminaire

Lamp	Report		
No. of lamps	Filename D:\배광\16data\포스라이팅\플레닛 원형투광등 120W 5700K PHB-12012A-DA 3005 0331.jdt		
Lamp flux (lm)	Operator	Current (A)	0.561
Total flux (lm)	Date46	Power Factor	0.97

2016-03-31 오후 4:18:44



All luminous intensity values are in Cd/KLm unit.

Luminaire

Lamp	Report		
No. of lamps	Filename D:\배광\16data\포스라이팅\플레넷 원형투광등 120W 5700K PHB-12012A-DA 3005 0331.jdt		
Lamp flux (lm)	Operator	Current (A)	0.561
Total flux (lm)	Date46	Power Factor	0.97

2016-03-31 오후 4:18:44

Luminous Intensity Data

GWC	0	30	60	90	120	150	180	210	240	270	300
0	6890.73	6889.32	6887.46	6885.30	6883.60	6882.17	6890.73	6889.32	6887.46	6885.30	6883.60
5	6865.41	6864.29	6863.57	6861.61	6861.43	6860.42	6865.75	6865.31	6861.52	6858.00	6854.30
10	6791.42	6790.37	6790.99	6789.63	6790.47	6789.80	6792.51	6792.64	6788.14	6782.76	6777.75
15	6702.74	6700.43	6700.82	6701.40	6704.16	6703.75	6706.81	6707.75	6703.66	6698.67	6693.19
20	6595.47	6595.40	6597.62	6599.34	6606.27	6607.31	6594.69	6580.66	6565.09	6552.40	6559.35
25	6031.77	6053.14	6077.70	6104.84	6145.27	6138.72	6015.24	5937.52	5850.22	5826.31	5840.26
30	4719.34	4750.27	4792.74	4846.49	4899.13	4882.21	4725.86	4643.68	4531.84	4505.66	4498.69
35	3459.61	3482.92	3520.50	3561.40	3576.75	3556.80	3490.95	3468.87	3415.08	3397.03	3368.07
40	2780.85	2785.25	2818.13	2835.64	2830.19	2824.96	2838.98	2875.08	2882.45	2870.78	2813.13
45	2659.48	2637.67	2649.01	2661.70	2646.05	2663.86	2758.12	2832.66	2890.04	2888.19	2809.73
50	3347.75	3352.64	3316.95	3244.22	3146.96	3127.16	3303.22	3431.89	3613.30	3745.02	3651.82
55	4515.78	4493.70	4559.60	4532.55	4754.97	4933.67	4757.29	4763.92	4739.55	4567.17	4535.69
60	2580.52	2580.67	2592.62	2684.32	2744.80	2840.62	2753.86	2737.23	2635.75	2598.66	2539.04
65	1742.73	1603.07	1739.25	1637.20	1843.63	1685.39	1700.15	1869.16	1646.23	1808.37	1607.16
70	977.41	887.55	968.20	921.71	1016.66	983.28	963.61	1030.60	946.30	1009.17	914.54
75	541.69	514.74	543.09	552.67	569.07	605.16	577.78	608.40	575.02	580.75	550.17
80	299.42	239.55	302.76	258.36	330.96	287.30	285.92	348.84	282.82	331.09	257.68
85	96.26	42.30	98.66	49.35	116.29	61.99	61.97	126.85	60.43	115.46	49.10
90	6.98	8.32	7.09	8.09	6.95	7.63	6.92	7.78	7.07	6.53	7.42

Luminaire

Lamp	Report		
No. of lamps	Filename D:\배광\16data\포스라이팅\플레넷 원형투광등 120W 5700K PHB-12012A-DA 3005 0331.jdt		
Lamp flux (lm)	Operator	Current (A)	0.561
Total flux (lm)	Date46	Power Factor	0.97

2016-03-31 오후 4:18:44

Luminous Intensity Data (Continued)

GWC	330	360
0	6882.17	6890.73
5	6852.60	6865.41
10	6775.80	6791.42
15	6689.00	6702.74
20	6570.09	6595.47
25	5906.43	6031.77
30	4540.08	4719.34
35	3337.06	3459.61
40	2752.95	2780.85
45	2726.67	2659.48
50	3518.57	3347.75
55	4579.66	4515.78
60	2553.98	2580.52
65	1736.13	1742.73
70	935.70	977.41
75	513.53	541.69
80	299.43	299.42
85	97.12	96.26
90	6.26	6.98

Luminaire

Lamp	Report		
No. of lamps	Filename D:\배광\16data\포스라이팅\플레넷 원형투광등 120W 5700K PHB-12012A-DA 3005 0331.jdt		
Lamp flux (lm)	Operator	Current (A)	0.561
Total flux (lm)	Date46	Power Factor	0.97

2016-03-31 오후 4:18:44

Luminous Flux Table

Total Lamp Lumens: 15646
 Luminaire Efficiency (lm/W)16130.10
 CIE Classification: Direct

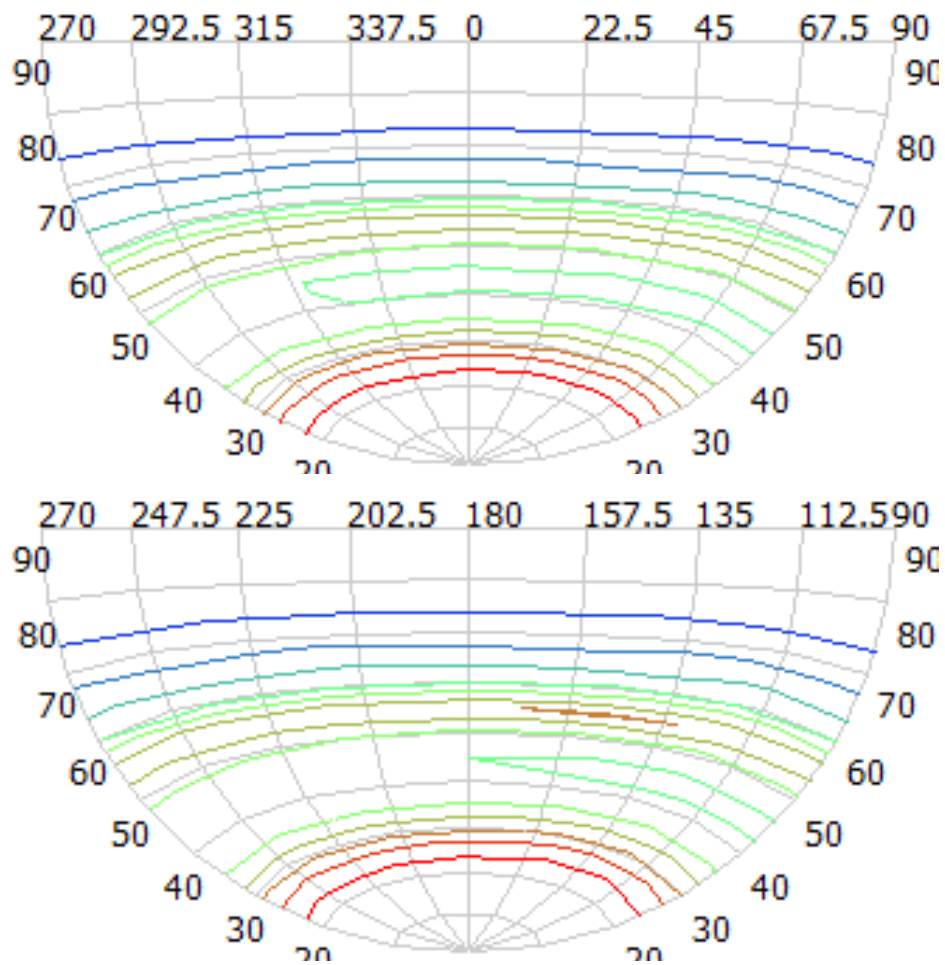
Elevation	Lumens	Cumulative	Lamp %	Luminaire %
0	41.18	41.18	0.26	0.26
5	327.78	368.96	2.36	2.36
10	646.07	1015.04	6.49	6.49
15	950.67	1965.70	12.56	12.56
20	1234.57	3200.28	20.45	20.45
25	1388.52	4588.79	29.33	29.33
30	1286.66	5875.45	37.55	37.55
35	1090.83	6966.29	44.52	44.52
40	995.59	7961.88	50.89	50.89
45	1060.17	9022.05	57.66	57.66
50	1427.63	10449.68	66.79	66.79
55	2085.40	12535.08	80.12	80.12
60	1259.62	13794.71	88.17	88.17
65	853.57	14648.28	93.62	93.62
70	495.97	15144.25	96.79	96.79
75	297.03	15441.28	98.69	98.69
80	158.53	15599.81	99.70	99.70
85	44.40	15644.21	99.99	99.99
90	1.99	15646.20	100.00	100.00

Luminaire

Lamp	Report		
No. of lamps	Filename D:\배광\16data\포스라이팅\플레넷 원형투광등 120W 5700K PHB-12012A-DA 3005 0331.jdt		
Lamp flux (lm)	Operator	Current (A)	0.561
Total flux (lm)	Date46	Power Factor	0.97

2016-03-31 오후 4:18:44

IsoCandela (Type C)



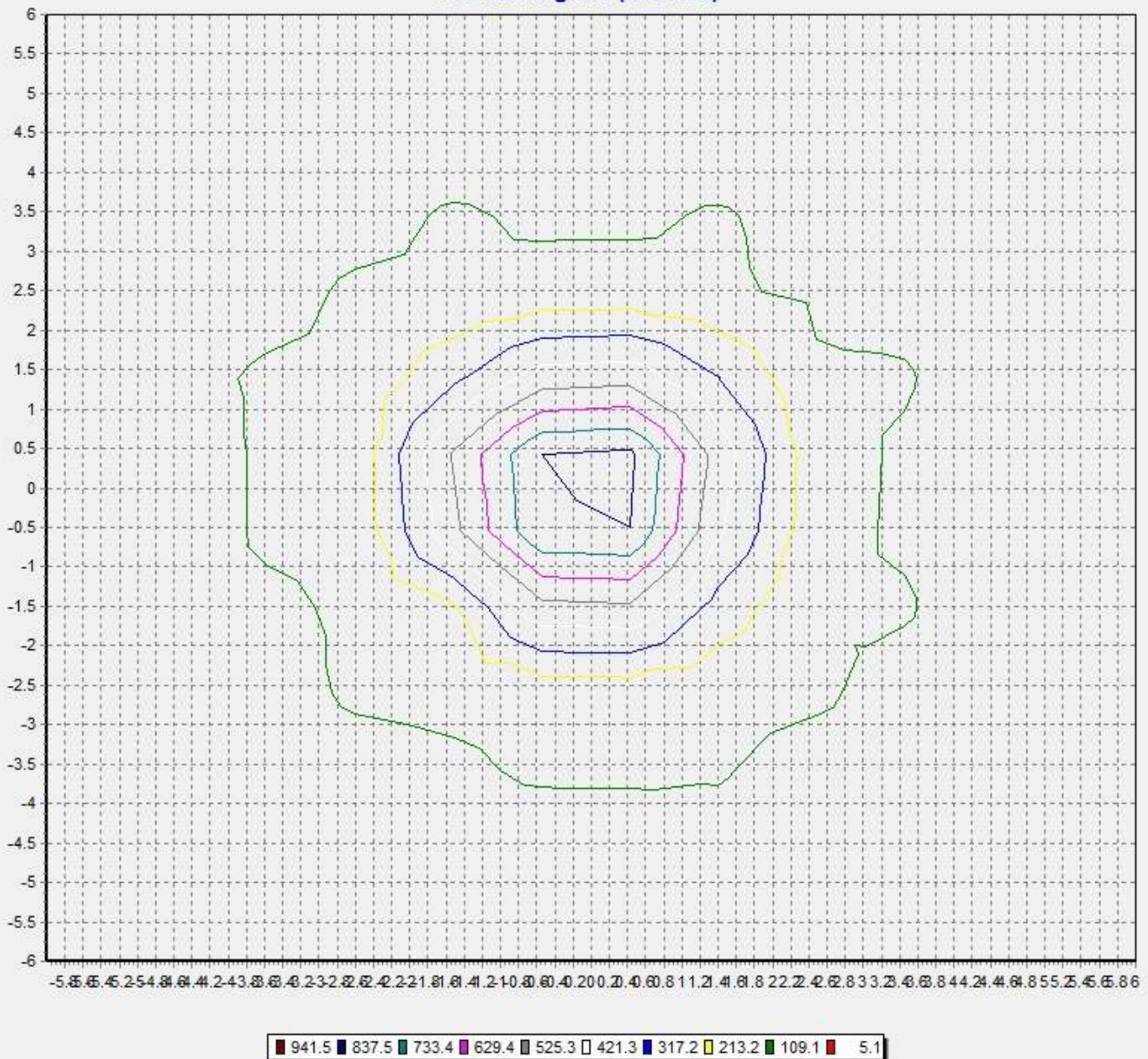
	6 ~ 695		3448 ~ 4137
	695 ~ 1383		4137 ~ 4825
	1383 ~ 2072		4825 ~ 5514
	2072 ~ 2760		5514 ~ 6202
	2760 ~ 3448		6202 ~ 6891

Luminaire

Lamp	Report		
No. of lamps	Filename D:\배광\16data\포스라이팅\플레닛 원형투광등 120W 5700K PHB-12012A-DA 3005 0331.jdt		
Lamp flux (lm)	Operator	Current (A)	0.561
Total flux (lm)	Date46	Power Factor	0.97

2016-03-31 오후 4:18:44

IsoLux Diagram (Ground)



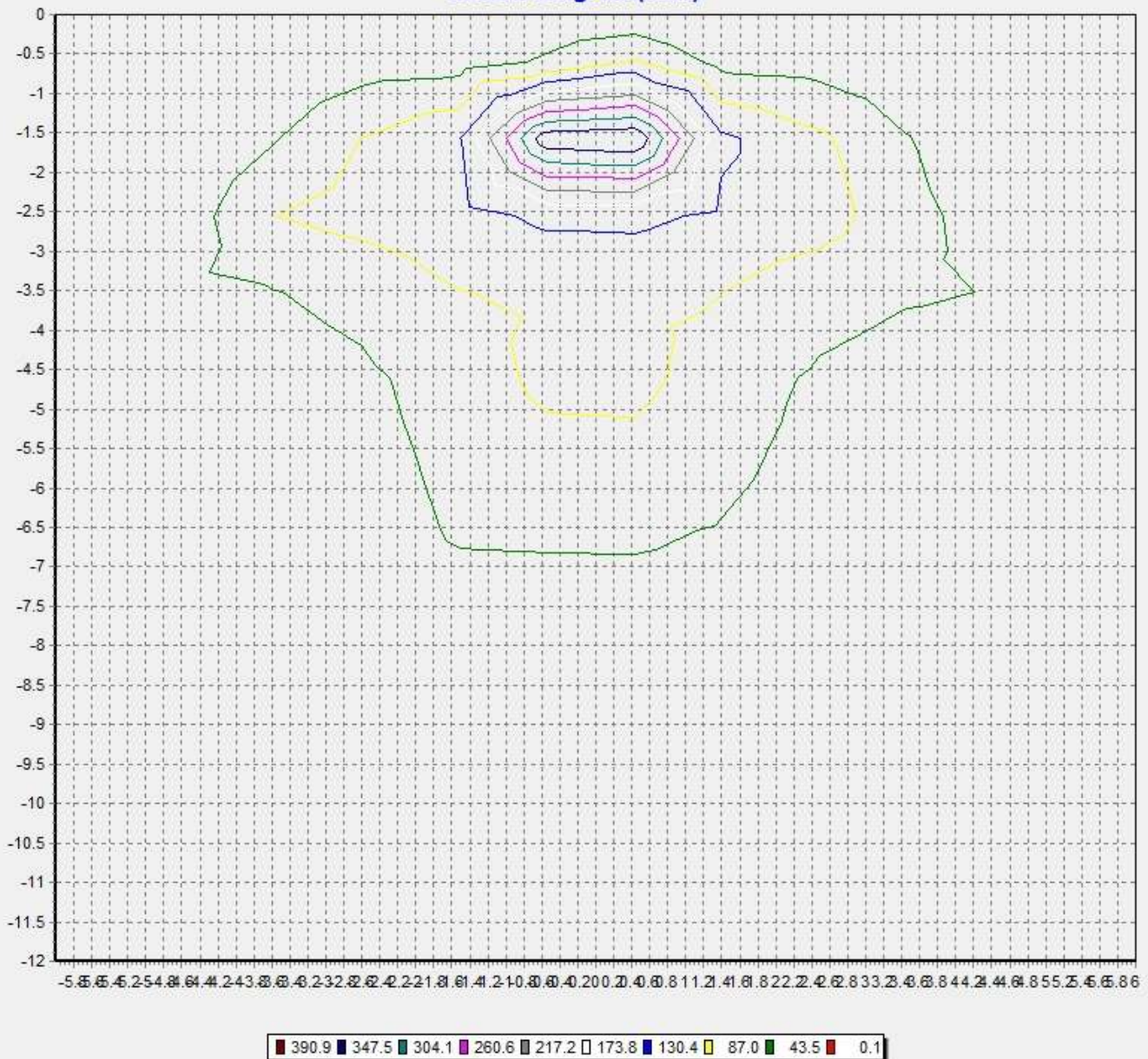
Pole Height (m): 2.7
 Area Width (m): 12

Luminaire

Lamp	Report		
No. of lamps	Filename D:\배광\16data\포스라이팅\플레닛 원형투광등 120W 5700K PHB-12012A-DA 3005 0331.jdt		
Lamp flux (lm)	Operator	Current (A)	0.561
Total flux (lm)	Date46	Power Factor	0.97

2016-03-31 오후 4:18:44

IsoLux Diagram (Wall)



Pole Height (m): 2.7 Wall Distance (m): 2.7
 Aiming Plane: 0 Wall Height (m): 12

Luminaire

Lamp

Report

No. of lamps	1	Voltage (V)	220.59	Filename	D:\배광\16data\포스라이팅\플레넷 원형투광등 120W 5700K PHB-12012A-DA 3005 0331.jdt
Lamp flux (lm)	15646	Current (A)	0.561	Operator	
Total flux (lm)	15646	Power Factor	0.97	Date	2016-03-31 오후 4:18:44

Illuminance Levels (Ground)

6.00	5.27	7.49	5.97	9.42	19.60	22.23	23.91	22.40	18.56	8.39	6.14	7.44	5.07
5.00	7.65	6.90	18.28	27.01	25.86	52.61	57.83	52.69	24.05	26.11	17.78	6.63	7.45
4.00	6.29	18.91	20.18	58.40	60.31	84.20	84.00	84.12	57.05	57.49	19.37	17.74	6.19
3.00	9.47	28.52	62.04	77.88	120.37	117.63	123.72	122.82	121.18	74.98	57.11	26.00	8.39
2.00	19.97	26.14	60.77	125.86	125.78	180.84	316.98	178.01	124.07	120.75	57.01	24.05	18.54
1.00	23.36	55.79	85.65	116.10	180.77	520.89	757.30	510.22	177.73	123.24	86.48	52.29	21.86
0.00	24.56	60.39	86.20	126.75	309.48	757.84	945.23	757.42	308.48	126.25	85.92	57.16	23.24
-1.00	23.58	56.27	85.58	124.89	182.69	504.73	756.67	489.09	178.44	132.18	86.29	52.20	21.94
-2.00	19.84	26.21	60.47	125.03	128.28	182.94	296.56	179.26	128.43	123.91	56.61	23.91	18.35
-3.00	9.58	27.69	60.38	79.44	127.67	129.12	139.81	135.37	125.85	75.35	57.55	25.73	8.49
-4.00	6.21	18.68	20.65	59.81	60.26	90.82	93.84	90.79	56.68	57.62	19.70	17.59	6.01
-5.00	7.71	7.09	18.16	26.55	25.96	53.20	57.76	53.60	24.12	26.18	17.91	6.82	7.42
-6.00	5.41	7.56	6.10	9.55	19.54	22.25	23.48	22.23	18.53	8.54	6.39	7.66	5.19
	-6.00	-5.00	-4.00	-3.00	-2.00	-1.00	0.00	1.00	2.00	3.00	4.00	5.00	6.00

Illum. (Max.): 945
 All illuminance level values are in lux.
 Illum. (Min.): 5.07
 Illum. Avg.: 94.3

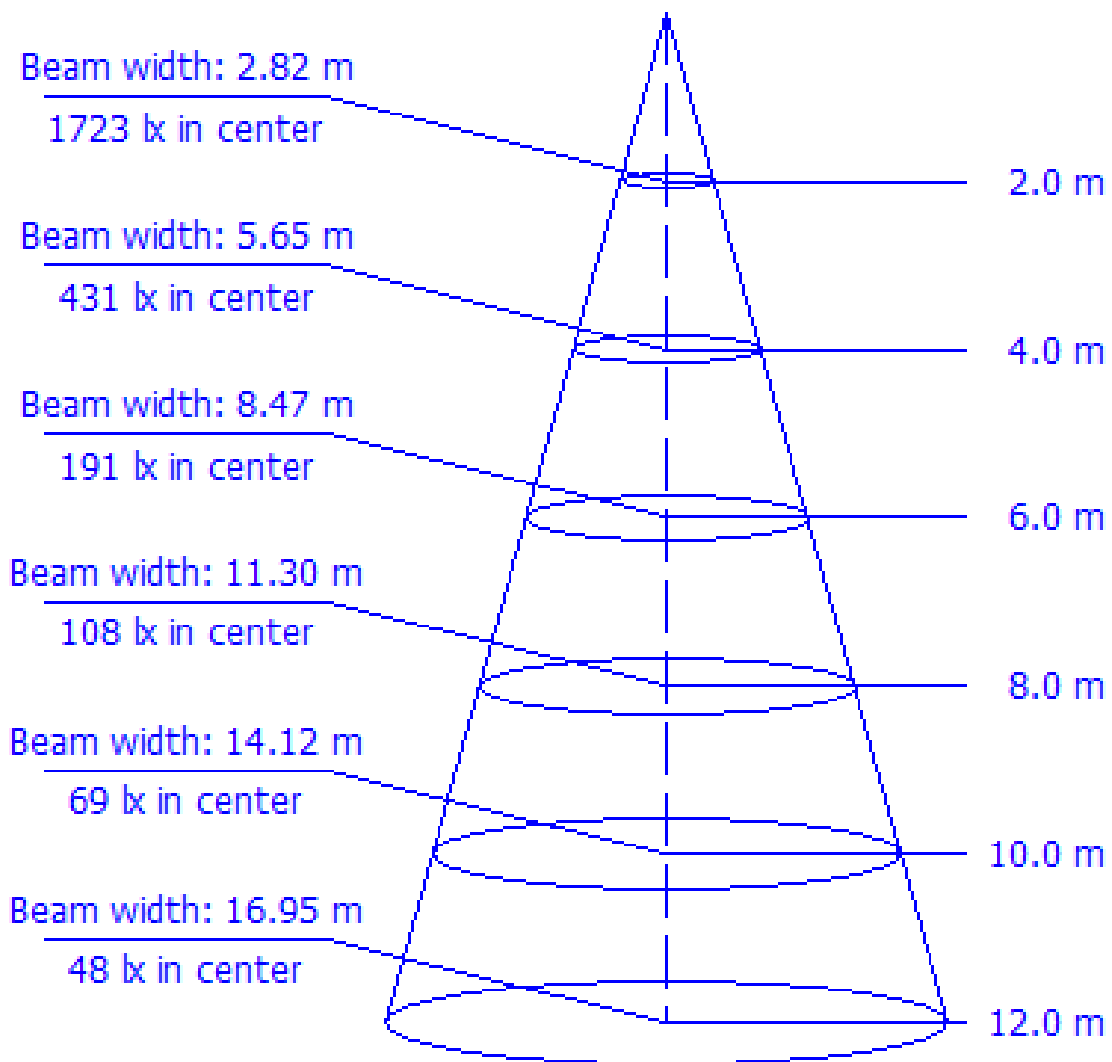
Total Optical Solution Provider

Luminaire

Lamp	Report		
No. of lamps	Filename D:\배광\16data\포스라이팅\플레닛 원형투광등 120W 5700K PHB-12012A-DA 3005 0331.jdt		
Lamp flux (lm)	Operator	Current (A)	0.561
Total flux (lm)	Date46	Power Factor	0.97

2016-03-31 오후 4:18:44

Illuminance Cone Diagram



Beam Angle = 70 deg.

Based on 50% of maximum illuminance.

Luminaire

Lamp

Report

No. of lamps	1	Voltage (V)	220.59	Filename	D:\배광\16data\포스라이팅\플레넷 원형투광등 120W 5700K PHB-12012A-DA 3005 0331.jdt
Lamp flux (lm)	15646	Current (A)	0.561	Operator	
Total flux (lm)	15646	Power Factor	0.97	Date	2016-03-31 오후 4:18:44

Coefficient of Utilization

	Refl. Ceiling (%)	80%	80%	80%	70%	70%	70%	50%	50%	50%	30%	30%	30%	10%	10%	10%	0%
	Refl. Wall (%)	50%	30%	10%	50%	30%	10%	50%	30%	10%	50%	30%	10%	50%	30%	10%	0%
Eff. Floor Cavity	Refl.	20%	20%	20%	20%	20%	20%	20%	20%	20%	20%	20%	20%	20%	20%	20%	20%
Room CR	0	1.23	1.23	1.23	1.20	1.20	1.20	1.14	1.14	1.14	1.10	1.10	1.10	1.05	1.05	1.05	1.03
Room CR	1	1.09	1.05	1.01	1.06	1.03	1.00	1.02	0.99	0.96	0.98	0.96	0.93	0.94	0.92	0.91	0.89
Room CR	2	0.95	0.89	0.83	0.94	0.87	0.82	0.90	0.85	0.80	0.87	0.82	0.79	0.83	0.80	0.77	0.75
Room CR	3	0.84	0.76	0.70	0.82	0.75	0.69	0.79	0.73	0.68	0.77	0.71	0.67	0.74	0.69	0.66	0.63
Room CR	4	0.75	0.66	0.59	0.73	0.65	0.59	0.71	0.64	0.58	0.68	0.62	0.57	0.66	0.61	0.56	0.54
Room CR	5	0.67	0.58	0.51	0.66	0.57	0.51	0.63	0.56	0.50	0.61	0.55	0.50	0.60	0.54	0.49	0.47
Room CR	6	0.60	0.51	0.45	0.59	0.51	0.44	0.57	0.50	0.44	0.56	0.49	0.44	0.54	0.48	0.43	0.41
Room CR	7	0.55	0.46	0.40	0.54	0.45	0.39	0.52	0.45	0.39	0.51	0.44	0.39	0.49	0.43	0.39	0.37
Room CR	8	0.50	0.41	0.36	0.49	0.41	0.35	0.48	0.41	0.35	0.47	0.40	0.35	0.45	0.39	0.35	0.33
Room CR	9	0.46	0.38	0.32	0.45	0.38	0.32	0.44	0.37	0.32	0.43	0.37	0.32	0.42	0.36	0.32	0.30
Room CR	10	0.43	0.35	0.29	0.42	0.34	0.29	0.41	0.34	0.29	0.40	0.34	0.29	0.39	0.33	0.29	0.27